

CAPABILITY STATEMENT



AXIS
HIRE

LISTENING

Your business is unique. It therefore stands to reason that your fleet needs to be specifically tailored to your business' requirements. Our first task is to listen. With intent. Only then can we truly understand your projects, your team, your structure, your challenges and your objectives. Then and only then do we bring to bear our considerable experience, to devise and formulate a strategic based solution that ticks all your boxes.



CHARACTER

To us character is the foundation stone in building meaningful, and profitable business relationships that stand the test of time. Our character is typified in our 7 core behaviours that we have assimilated into every aspect of our operations.

Be honest

It's ok not to know something but it's not ok to make something up. It will come back to bite you. Own your mistakes also. We all make them.

Be present

Be attentive and actively listen when colleagues and clients are communicating. People should only have to say things once.

Be thorough

Be deliberate and be specific with the detail of your communications, so that you remove barriers, reduce misinterpretation and nullify ambiguity.

Be reliable

Let your actions follow your words and your words mirror your actions. Be someone who can be relied upon to deliver the outcomes we have agreed are necessary.

Be disciplined

Be consistent in thought and deed applying the blowtorch of rigorous self-discipline. Develop powerful daily habits that build individual and collective success.

Be inquisitive

Seek to understand all parts of the business immersing yourself within the industry. Understand how developments impact upon our clients and our competitors.

Be smart

The answer is not always in front of you. Think creatively, be an innovator and find new ways to tackle new challenges.

“
Character is the
foundation stone



EXPERIENCE

Expertise can't be engineered in the short term. It is developed and crafted through years of experience. Since 2007 Axis has been forging lasting partnerships with prominent mining, civil and construction companies across Australia. Together we've cultivated trading platforms that are highly innovative, practical and deliver best outcomes.

We don't see ourselves as just another hire company and neither do our clients. What we are is a highly resourced and experienced enterprise, comprising intelligent human capital, sound business practices and a comprehensive and diverse fleet of low-hour, well-maintained and fully spec'd equipment.

“
There's no replacement for experience”



2007
Founded in



4
Locations



+850
Machines in
Stock



TEAM

Whilst we house an impressive fleet, we know that our greatest assets are our people. Since inception our approach has been to handpick high performers who are experts in their field. People who are leaders and who are extremely agile. Because things never stay the same and we need thinkers who can manifest new solutions to new challenges and meet the ever-evolving needs of our clients.

Our long-standing business relationships are testament to our team who are known for their professionalism, tenacity, reliability and capability. We're passionate about our people and committed to their growth and well-being.

“
Great teams achieve great outcomes

LEADERSHIP



Mark Cates
Managing Director

Mark’s involvement in the rental industry has spanned over 20 years. His pragmatic customer-focused approach paired with a genuine interest in understanding his client’s requirements, means Mark is always ready to provide sound advice and fit for purpose equipment that gets the job done. Together with his hand-picked team, Axis Hire continues to grow from strength to strength.



Simon Jacob
Chief Financial Officer

Over the last three decades, Simon has accumulated considerable experience in such companies with skillsets spanning financial and management accounting, contractual law, systems development and improvement, tax, audit, corporate governance and company secretarial.



Dave Costa
Rental Manager

Dave has over 20 years’ experience in the heavy earthmoving, transport, mining and construction industries. Dave’s experience as a qualified heavy duty diesel mechanic, leading hand, foreman, supervisor, operations manager and business development executive enables his pragmatic approach and his operational background makes him the ideal person to ensure your requirements are matched to the right equipment in a safe and cost-effective manner.



Mike Brown
Plant Manager

Mike has over 30 years’ experience in the mining industry spanning multiple commodities such as gold, iron ore and coal. Joining the Axis Hire team in 2019, Mike has brought with him a depth of industry experience having worked with companies such as Mount Gibson, Saracen, KCGM, BMA, HSE Rental and SMS Rental. Key aspects of Mike’s role at Axis Hire include managing safety and equipment operational performance, planning and customer relationship management.

SERVICE OVERVIEW

LONG-TERM HIRE SOLUTIONS

We have an extensive and diverse range of equipment for long-term hire from large to small, including dump trucks, graders, dozers, loaders, excavators, rollers, water carts, service trucks, water trucks, tipper trucks, vacuum trucks, fuel trucks, crane trucks, skid steers, prime movers, flat bed trucks, fitters trucks, off-road buses, hiluxes and land cruisers.

We are adept at constructing detailed, tailored commercial arrangements that make complex matters simple.



CUSTOM REBUILDS

We're able to restore and rebuild large equipment, where there are multiple components involved, or modify equipment for specific project functionality.



MAINTENANCE & DETAILING

As well as total rebuilds our experienced crews carry out servicing and equipment detailing at our 2 south west locations, our Perth based site and our Newman branch.



TRANSPORT HAULAGE

With our own haulage trucks, we're able to manage the logistics of mobilising equipment to all parts of Australia.

EQUIPMENT SOURCING

Over many years we've established and nurtured vast partnership networks enabling us to source and acquire equipment for our clients. We can mobilise quickly, make the calls that need to be made and provide options to meet client solutions. Our expertise allows us to provide alternatives and in most cases add value and choice beyond the initial requirement or objective. Our skilled and experienced rental and plant managers are on hand to assist with equipment sourcing, selection and customisation.

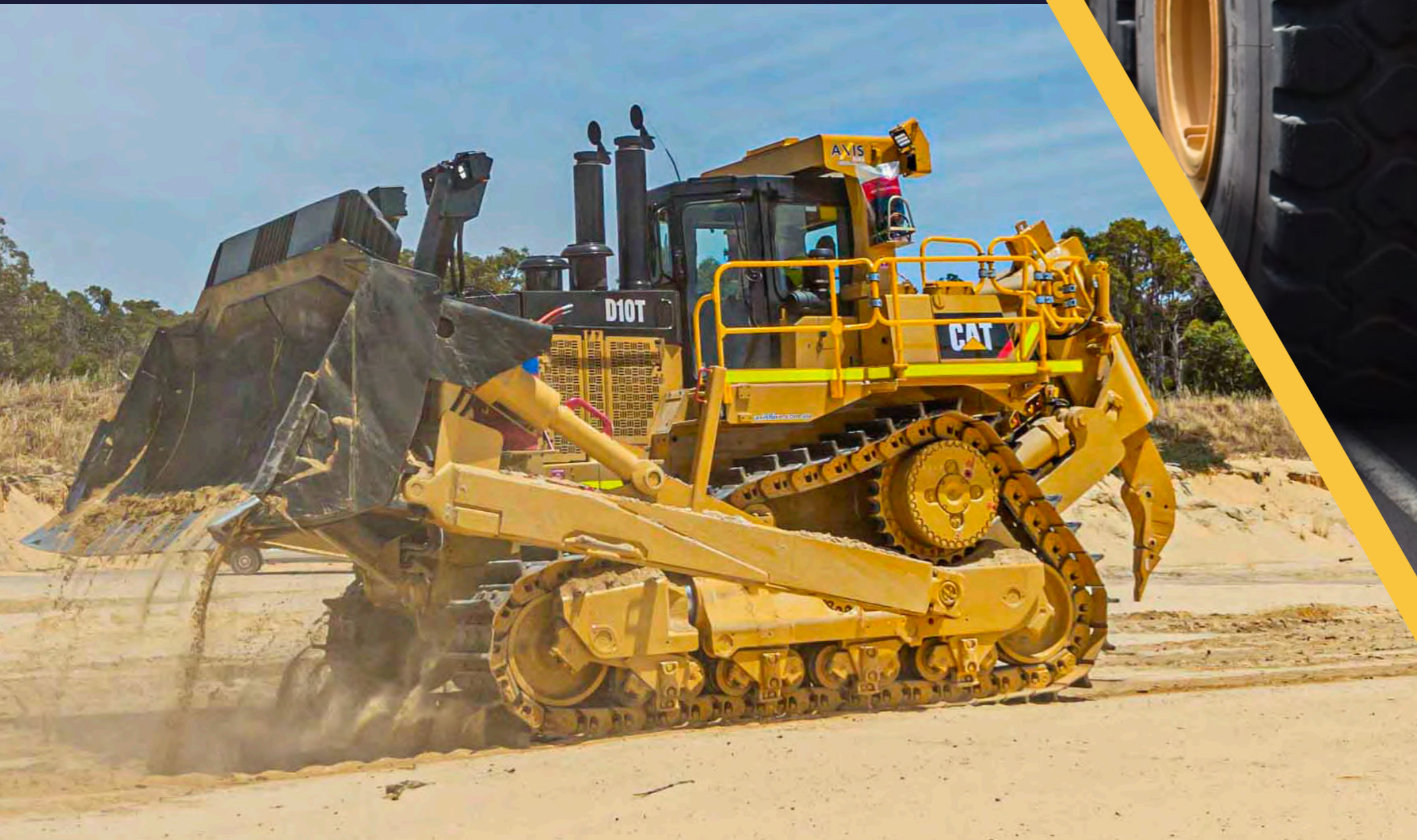


FLEET

CIVIL & EARTHMOVING

Whatever your project requires, you'll find it in our fleet of excavators, rollers, dozers, loaders, graders, dump trucks, water carts, water trucks and skid steer units. We specialise in supplying the industry's leading companies with mining, civil and construction specific equipment for hire, that is built to the highest specifications.

We have a large fleet of low hour, well-maintained equipment. With safety, functionality and reliability at the forefront, you can have total peace of mind knowing our equipment will operate exactly as you want it to.



HEAVY TRUCKS

Our fleet of heavy trucks are available in a myriad of configurations, including water supply, crane/hiab, flat bed, tilt tray, service truck, vacuum truck, tipper truck and prime mover, all fully mine spec'd.

Regardless of where you are in Australia, we understand that supply delays, or the supply of mismatched vehicles and hire equipment directly translates to loss of time and productivity. Working closely with you as an external part of your team, we will go the extra distance to ensure you have exactly what you need, when you need it.

LIGHT TRUCKS

We offer a large fleet of 4x2 and 4x4 trucks that can be built to client specifications. Whether it's a flat bed truck or heavy fitters truck, Axis can fulfil your requirements.



“
Diversity expands choice



LIGHT VEHICLES

Built tough, our light commercial vehicles are current models, and fully mine spec'd Australia wide. You won't find 'options' here, as we fit everything to our vehicles. As with the rest of our fleet we're able to custom build for specific jobs.



BUSES

Getting to and from site safely, efficiently and comfortably is covered with our fleet of transfer on and off-road buses.



WORKSHOP

CUSTOM REBUILDS

In collaboration with partner businesses we're able to restore and rebuild large equipment of all kinds. Our mechanics have undertaken a range of impressive custom rebuilds on equipment such as D10T dozers and 16M graders.

These include a total strip-down and rebuild of all major driveline components, to a rebuild of hydraulic valves, cylinders and full equipment refurbishment.

16M Grader



Before rebuild



After rebuild

D10T Dozer



Before rebuild



After rebuild



Jeremy Tucker
Maintenance Coordinator
jeremy@axishire.com.au



Mat Guelpa
Operations Manager
mat@axishire.com.au





DETAILING

With custom-built detailing sites at our south west and Newman locations, we are fully equipped to tackle the most difficult detailing challenges.

We've developed a rigour around our detailing operations that is second to none, enabling us to efficiently transform red dirt-covered equipment into 'as new' ready to roll, fleet.

MAINTENANCE

With a very large dedicated workshop we're able to carry out detailed maintenance work on equipment of any size.

We've got an excellent maintenance team comprising established mechanics with 25+ years experience, through to dynamic apprentices who receive the very best mentoring possible. The crew help maintain a very diverse range of fleet equipment from light vehicles through to large earthmoving equipment and they're sticklers for detail.



APPLICATIONS



NORTH WESTERN AUSTRALIA

Throughout the Pilbara region, Axis provides a multitude of earthmoving equipment for a plethora of the states most recognised mining projects. This includes the supply of excavators, dozers, graders, loaders, dump trucks, as well as light vehicles and coaches during the construction phase of various projects and transitioning into equipment supply for the projects operational life.

On many sites Axis Hire provide a diverse range of fleet to support EPCM and Bulk Earthworks Contractors, covering light vehicles, to special build off-road bulk fuel tankers, welding, fitting, rail construction and service trucks.



Axis Hire is also the major supplier of equipment to the general services and maintenance contractors throughout the region with fleet ranging from specialist build vacuum trucks, water tankers, support and service trucks, as well as civil construction fleet such as skid steer units and wheel loaders of varying capacities.

We are particularly proud of our relationship with our indigenous partners who support these operations.



SOUTH WESTERN AUSTRALIA

To the south west of the state, Axis Hire provides a selection of buses, earthmoving equipment, cranes, rollers and water trucks – all fully equipped to the site's specific requirements.

As this is a critical component of our client's operations, it's paramount that their fleet is maintained to the rigorous standards we set ourselves.



GOLDFIELDS

In the south eastern corner of Western Australia, Axis Hire is responsible for the supply of high quality fleet vehicles to various sites throughout the region.

Our forte is specialist builds which meet the exacting requirements of our clients. We partner with our manufacturers to provide equipment solutions for challenging conditions.



NORTHERN TERRITORY

Axis Hire provided bulk haulage fleet, earthmoving equipment support trucks and light vehicles during our Northern Territory clients operations. The fleet was purchased specifically for the project, with significant input from the Axis Hire team to ensure the fleet met the specific requirements of the client.

Axis Hire has also provided significant earthmoving and support fleet to several contractors involved in the construction of other projects across the region, which have continued into the current operational phase.



QUEENSLAND

Throughout Queensland, Axis Hire is a supplier of earthmoving equipment and light and heavy trucks. The fleet ranges from mine spec to specialist fleet, all tailored to meet the exacting and specific requirements of each operational environment.

Axis is also the primary supplier of special build drill and blast equipment for select projects across the state.

“*a solutions based approach*”



SUSTAINABILITY & SAFETY

Axis Hire is an environmentally conscious organisation. We acknowledge the impact that our operations may potentially have on the environment.

With a sustainable mindset we are committed to continually improving our work practices to limit the negative impact our operations may have on the environment.

To this end, full adherence to relevant legislative requirements, together with training and compliance with workplace procedures ensures environmental best practices are maintained.



“
Safety always, without compromise

“
There's power in giving



COMMUNITY

Though our business is Australia wide, we are very conscious in supporting the local communities in which our businesses reside. It's where we live and thrive.

Where we can, we are delighted to make a difference whether it's directly sponsoring a community event that brings joy, provides opportunity or gives a sense of comfort and relief.

WHY AXIS?

DYNAMIC

We operate within a very agile framework, which affords flexibility and enables us to customise solutions with a high degree of efficiency. Our experienced personnel possess both the expertise and the foresight to adapt to challenges swiftly, yet thoughtfully. We are constantly innovating and adapting our model and methodology to ensure relevancy and meet market demands. We are dynamic.

DIVERSE

With an expansive and diverse fleet range, we can tailor solutions that are 'fit for purpose'. With a substantial stock of quality equipment, from light vehicles through to very large earthmoving equipment, we are able to resource projects across the mining, civil and construction industries. Our extensive networks allows us to source and mobilise specialist equipment rapidly. We are diverse.

DETAILED

We understand that it is the little things that matter just as much as the big things. Whilst we know that perfection is elusive, we seek it. Our attention to detail across all facets provides reliability and certainty. We are detailed in how we prepare written information, in our general communication and in the attention and quality we give when maintaining and detailing equipment. We are detailed.

DRIVEN

We are focused and hard-working and we never rest on our laurels. We continually strive for improvement. We understand that success is a symbiosis where all parties gain. We are equally driven to help our clients' enterprises grow and succeed, as we are our own. We are driven.

OUR PROMISE TO YOU

To listen carefully. To be respectful in all our dealings with you. To provide you with the solution that suits you best. To be clear and prompt in our communication. To resolve any outstanding matters quickly.

OUR OPERATIONS



HEAD OFFICE

10 Mummery Crescent,
East Bunbury WA 6230
(08) 9791 8300



WORKSHOP

12 Proffit Street,
Davenport WA 6230
(08) 6149 1404




NEWMAN OFFICE

6 Shovelanna Street,
Newman WA 6753
Dave: 0455 552 143



PERTH OFFICE

109 - 117 Poole Street,
Welshpool WA 6106
(08) 9251 6200



**Your partner in
long-term hire**